

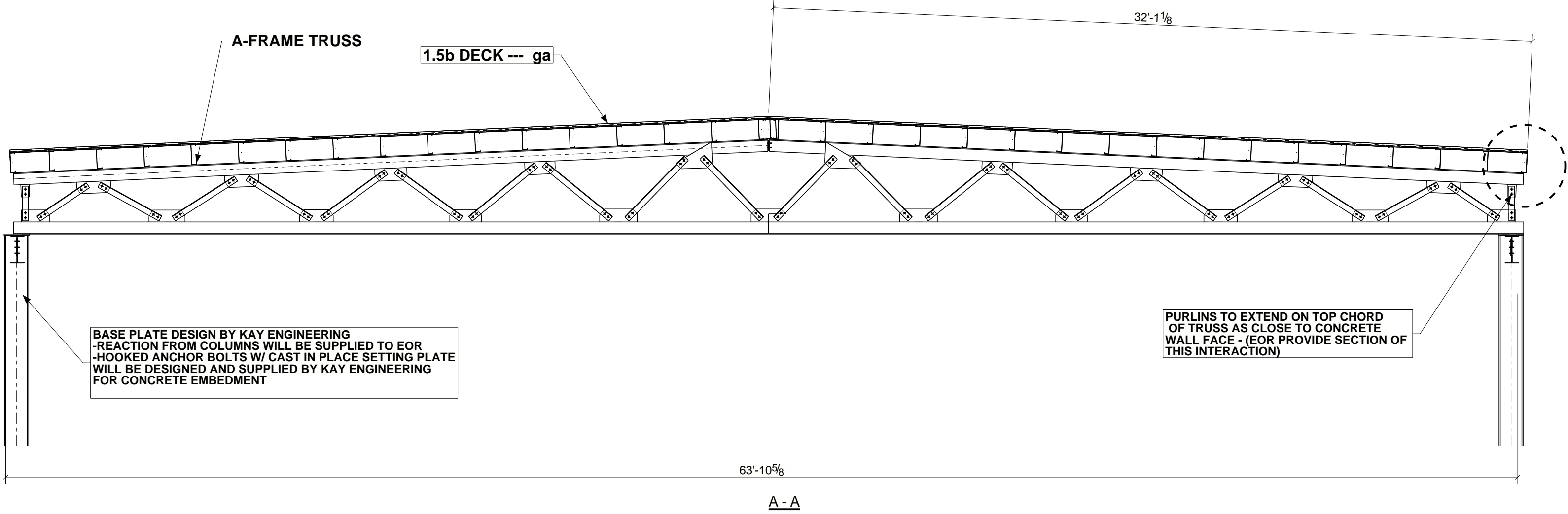
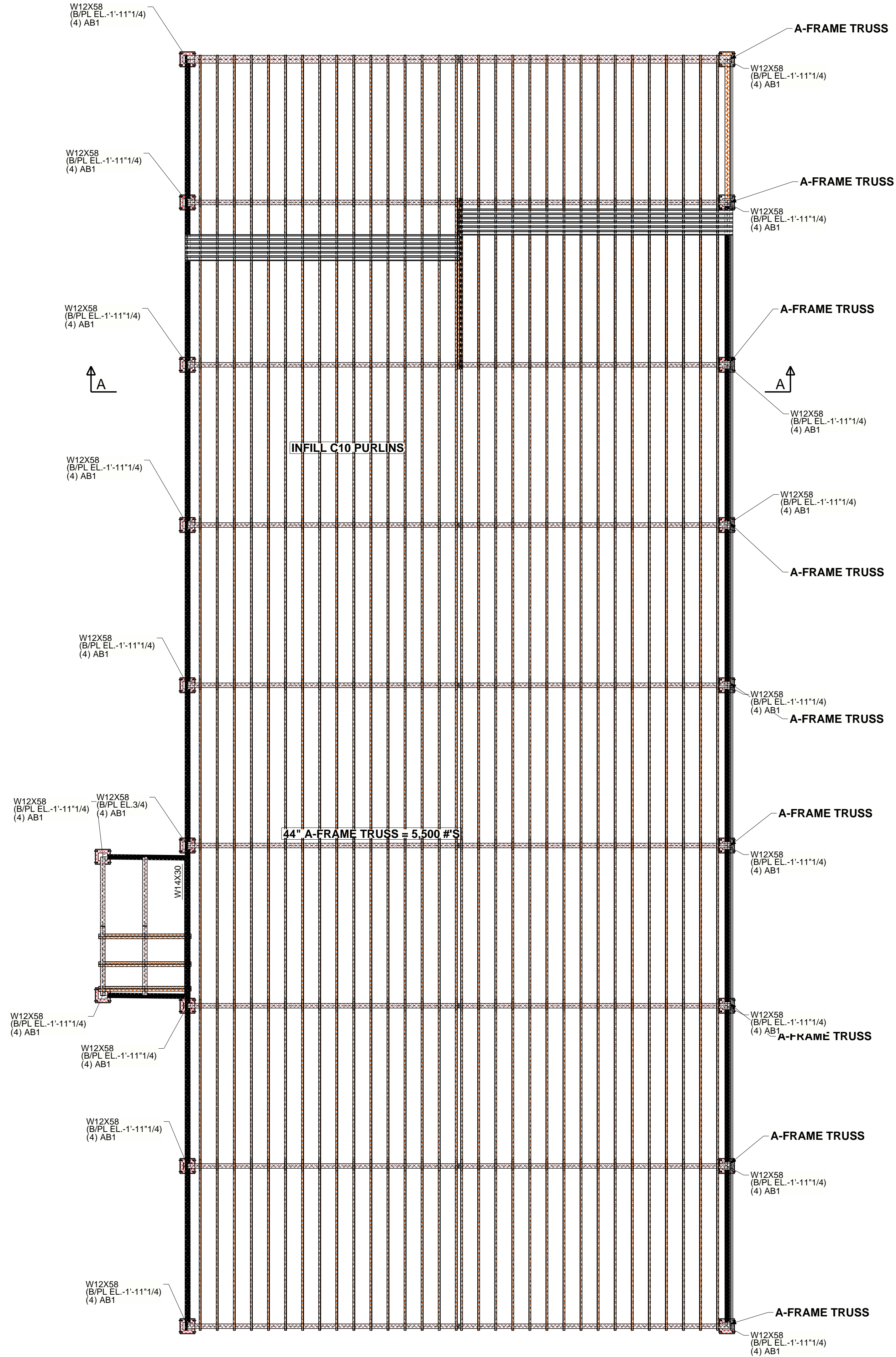
GENERAL NOTES
 1. MATERIALS:
 ASTM A500-GR B FOR HSS
 ASTM A588-GR 50 FOR WT & WT SHAPES
 2. WELDS:
 ELECTRODES E70xx
 3. W/FLAT COAT OF PRIMER (U.N.G.)
 4. BOLTS
 5. HSS (U.N.G.)
 6. HSS (U.N.G.)
 7. STANDARD HOLES (U.N.G.)
 8. ANCHOR BOLTS
 9. ANCHOR BOLTS (U.N.G.) WITH NUT & WASHER

BID	FOR BID	08/31/2021
REV	DESCRIPTION	DATE
KAY ENGINEERING		
DESCRIPTION	ISO	
PROJECT NAME	RANDOLPH	
DRAWN BY	JOB No.	DRG No.
DATE DRAWN	21080	11



MEMBER SIZES, WELD PATTERNS AND GEOMETRY TO BE GIVEN WITH DESIGN

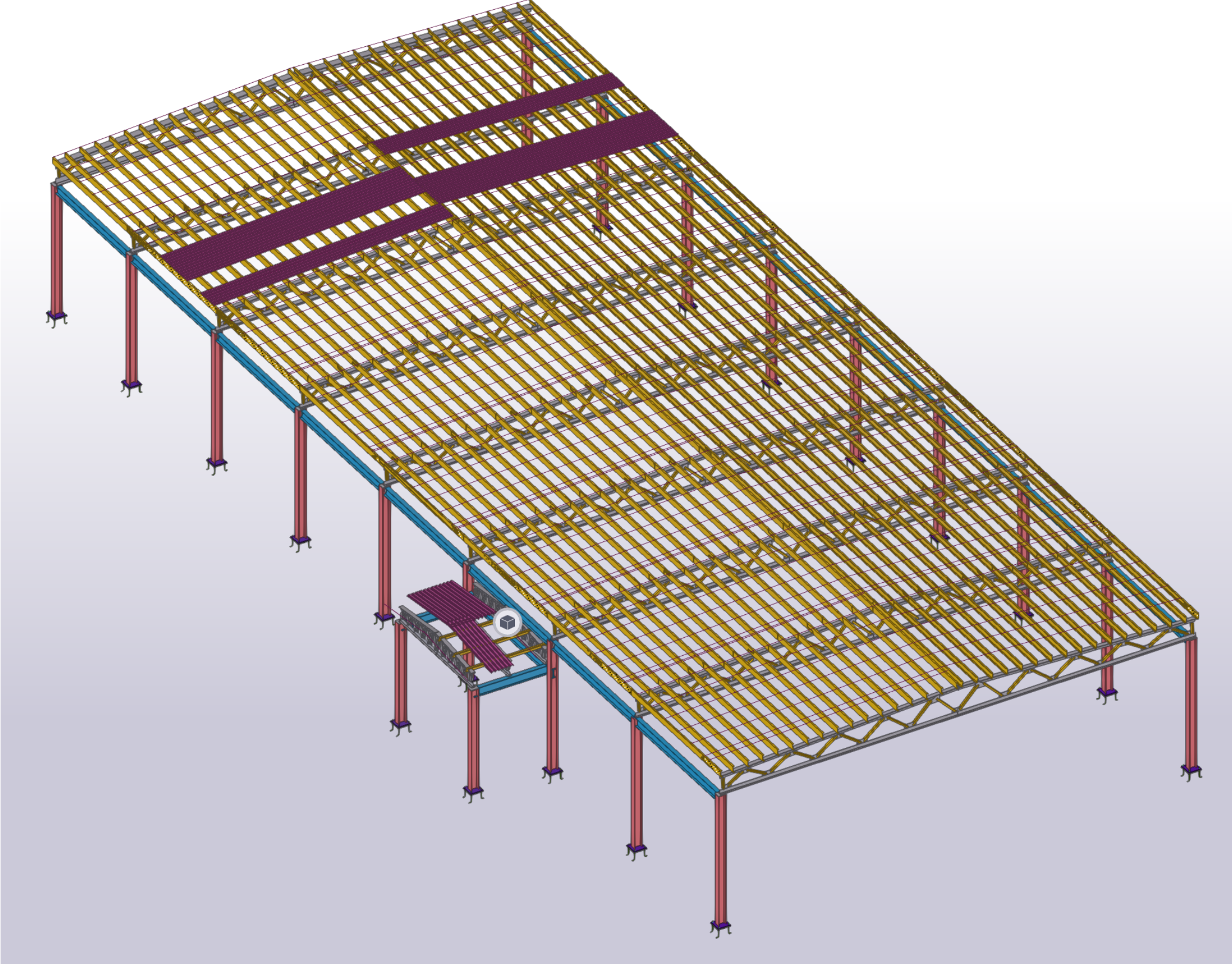
- T&B CHORDS WILL BE WT SECTIONS OR UNEVEN ANGLES
- BOTTOM CHORD BEARING ON BEARING PLATE W/ COLUMN SUPPORT BELOW
- NEED EXACT ROOF PITCH AND ALL REQUIRED HEIGHTS FOR ROOF
- DECK DESIGN BY KAY ENGINEERING
- NEED CLEAR DISTANCES BETWEEN TRUSSES
- KAY ENGINEERING WILL DESIGN X-BRACING AND PURLINS @ TOP
- PROVIDE EOR W/ COLUMN REACTIONS FOR FOOTINGS
- PROVIDE EOR LATERAL LOADS TRANSFER FROM STEEL TO CONCRETE (EOR TO SUPPLY DETAIL OF THIS INTERACTION)



BASE PLATE DESIGN BY KAY ENGINEERING
 -REACTION FROM COLUMNS WILL BE SUPPLIED TO EOR
 -HOOKED ANCHOR BOLTS W/ CAST IN PLACE SETTING PLATE WILL BE DESIGNED AND SUPPLIED BY KAY ENGINEERING FOR CONCRETE EMBEDMENT

PURLINS TO EXTEND ON TOP CHORD OF TRUSS AS CLOSE TO CONCRETE WALL FACE - (EOR PROVIDE SECTION OF THIS INTERACTION)

FOR DECKING MATERIAL:
 USE ~ ((35'+35') * 150') = 10,050 SQUARE FEET



+15.0 CCD = PLAN AT ELEV. +20

INFILL C10 PURLINS

44" A-FRAME TRUSS = 5,500 #S

BID	FOR BID	08/31/2021
REV	DESCRIPTION	DATE
KAY ENGINEERING		
DESCRIPTION	PLAN @ ELEV.	
PROJECT NAME	RANDOLPH	
DRAWN BY		JOB No. 21080
DATE DRAWN	08/24/2021	DRG No. E1

GENERAL NOTES

1. MATERIALS: ASTM A500 GR B FOR HSS, ASTM A575 SHAPES, T, C, PL, ASTM A582 (50ksi) FOR W & WT SHAPES.
2. WELDS: ELECTRODES E70xx
3. PAINT: COAT OF PRIMER (U.N.G.)
4. BOLTS: 3/4" DIA. (U.N.G.)
5. HOLES: STANDARD HOLES (U.N.G.)
6. ANCHOR BOLTS: 3/4" DIA. (U.N.G.) WITH NUT & WASHER.